

Alvira Ferreira

Curriculum vita

Born in Pretoria, South Africa on 16 December 1986.

Had BVA graduate exhibition in 2013.

Studies done through the University of South Africa

Co-founder of working studio/gallery [Imaginarium: the Studio](#) along with Alouette Ferreira

November 2012

The transmission of affect by fluid ego boundaries, UNISA Visual Art Third Year Exhibition 2012, Art.B Gallery, Cape Town, South Africa

November 2013

Intermediate Impossibles, UNISA Visual Art Graduate Exhibition 2013, The Lovell Gallery, Cape Town, South Africa

December 2014

Co-founded [Imaginarium: the Studio](#), St. Francis Bay, South Africa

May 2015

[\(Life\)Like](#) joint exhibition at State of the Art Gallery, Cape Town, South Africa

August-September 2015

Art residency at **Glo'Art**, Belgium

November 2015

Selected to participate in **Un Seul Grain De Riz** exhibition at Métanoïa Gallery in Paris

Alvira Ferreira

My work explores the connections between people. These connections can be social or familial, related to physical space between people or an intangible bond. I digitally collage photographs and then paint from these collages. I paint in order to maintain the human touch. It signifies my connection to the persons I paint and communicates some of myself to the viewer. Painting has the ability to make visible that which is not perceptible in a photograph and reflect the artist's subjective view. My aim is to visually engage and reward the viewer by presenting something alluring, engrossing, and sometimes surreal. My works are intended to be open-ended scenes or narratives that the viewer can think about and take further in their mind in their own way. I question reality by combining incongruous elements and making visible the invisible. I attempt to subvert the automatized perception of images by making strange, thereby prolonging the experience of viewing the artwork.



Personal Culture

2011

oil on board

75 x 122 x 2cm



Transmission of Affect II

The transmission of affect by fluid ego boundaries exhibition 2012

Oil paint, sealer, enamel, stainer, and collage on board

59.8cm x 49.7cm x 2cm

Intermediate Impossibles

In this body of work I have used painting to explore the unspoken dialogue that exists between the different generations within my family over a long period. I came across old photographs of my maternal family. Some of these photographs are more than one hundred years old and go back five generations. As I looked through these images I found myself comparing my generation to the older generations. It became clear to me that the function and context of photography have changed over the last century.



Family Gathering

Intermediate Impossibles exhibition 2013

Oil and varnish on board

250cm x 125cm x 3cm (total of 5 panels)



Family Outing

Intermediate Impossibles exhibition 2013

Oil and varnish on board

256cm x 145cm x 3cm (total of all panels)



Family Line

Intermediate Impossibles exhibition 2013

Oil and varnish on board

183cm x 137cm x 8cm (total of 3 panels)

(Life)Like

Art by Alvira and Alouette

This body of work explores the oscillating relationship between the real (physical) world and virtual reality, focusing specifically on the social media platform of Instagram. Their aim with this body of work was to paint contemporary images that have not been captured in the medium of paint before. To this end, they focus their attention on internet meme versions of age old genres. The portrait or self-portrait has been replaced by selfies and groupies. Planking is another example of this. It can be considered as a new way people move and hold themselves, unlikely to be found in portraits by the old masters. Still lives have been replaced by food porn, cat photos and “what’s in my bag” photos. The objects in these new still lives are arranged in ways that have largely not been used in paintings before: the objects are often captured from an aerial viewpoint and include contemporary objects like cell phones and sunglasses.

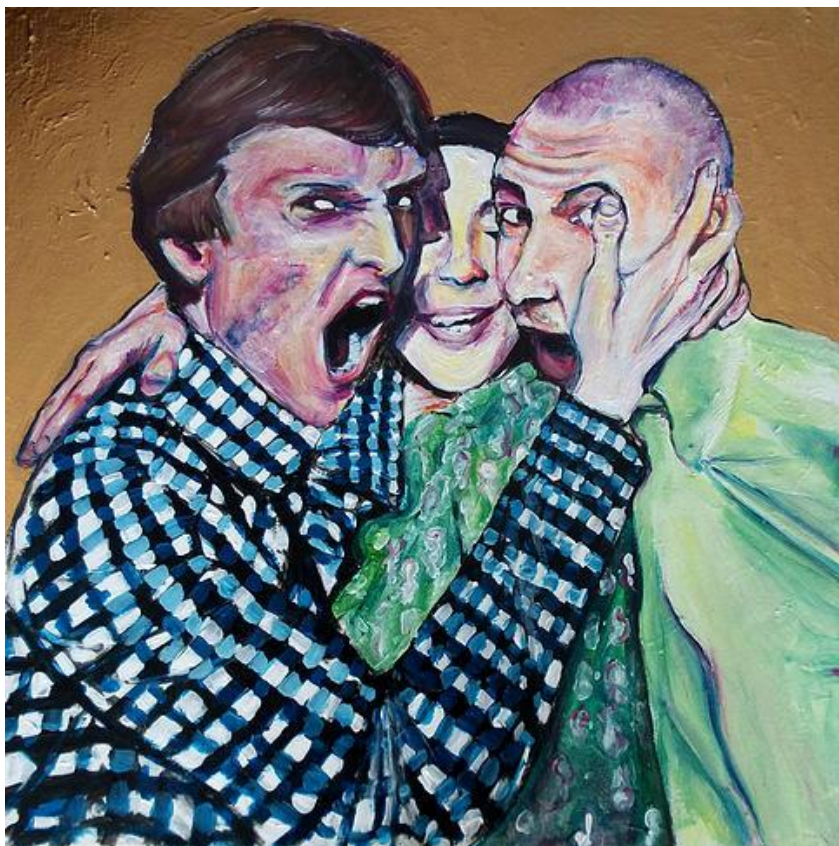


@izakgrapher

(Life)Like exhibition 2015

Oil and spray paint on board

40 x 40 x 4.5cm



Boy's Sandwich

Alvira Ferreira

(Life)Like exhibition 2015

Oil and spray paint on board

60cm x 60cm x 4.5cm

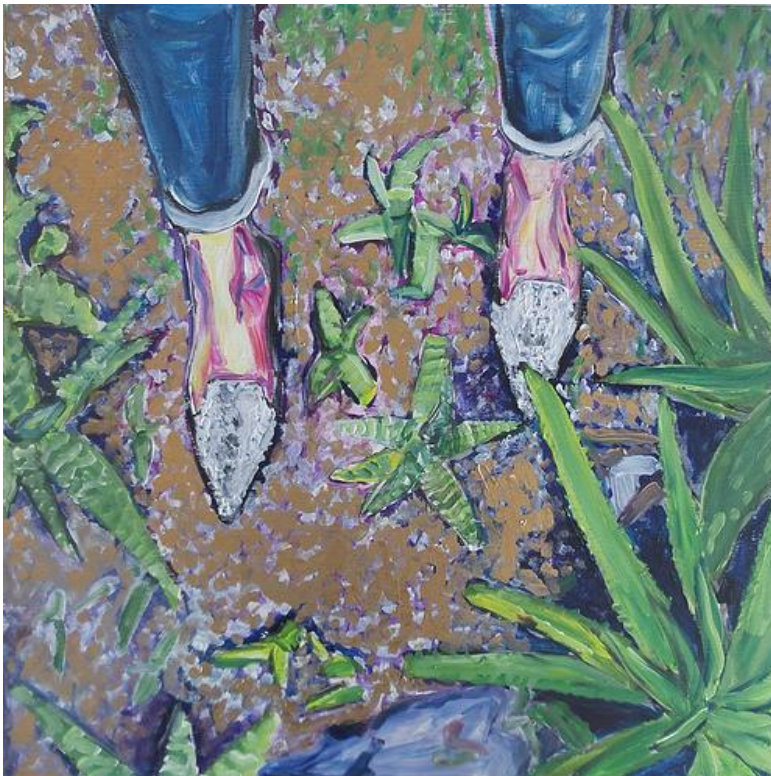


Ooo I Wanna Take You

(Life)Like exhibition 2015

Oil and spray paint on board

40cm x 40cm x 4.5cm



Going Wild

(Life)Like exhibition 2015

Oil and spray paint on board

40cm x 40cm 4.5cm



@annelize_visser

(Life)Like exhibition 2015

Oil and spray paint on board

120cm x 40cm x 4.5cm



@leandramedine

(Life)Like exhibition 2015

Oil and spray paint on board

120cm x 40cm x 4.5cm

Fakery

These artworks are from a little series called Fakery, in which I sought to combine images in a heuristic, intuitive manner. My work explores the connections between people. These connections can be social or familial, related to physical space between people or an intangible bond. I collaged magazine images together and then paint over these collages. I paint in order to maintain the human touch. It signifies my connection to the persons I paint and communicates some of myself to the viewer. Painting has the ability to make visible that which is not perceptible in a photograph and reflect the artist's subjective view. My aim is to visually engage and reward the viewer by presenting something alluring, engrossing, and sometimes surreal. My works are intended to be open-ended scenes or narratives that the viewer can think about and take further in their mind in their own way. I question reality by combining incongruous elements and making visible the invisible. I attempt to subvert the automatized perception of images by making strange, thereby prolonging the experience of viewing the artwork.



Handle with Care

Fakery Collage Series

Alvira Ferreira

Collage and oil on cardboard

21 x 12cm



Let in the Light

Fakery Collage Series

Alvira Ferreira

Collage and oil on cardboard

21 x 12cm



Ulterior Intentions

Fakery Collage Series

Alvira Ferreira

Collage and oil on cardboard

21 x 12cm



Geometric Dreams

Fakery Collage Series

Alvira Ferreira

Collage and oil on cardboard

21 x 12cm



Personal Island

Fakery Collage Series

Alvira Ferreira

Collage and oil on cardboard

12 x 21cm



Mountain Range

Fakery Collage Series

Alvira Ferreira

Collage and oil on cardboard

21 x 12cm



Converging Worlds

Fakery Collage Series

Alvira Ferreira

Collage and oil on cardboard

21 x 12cm

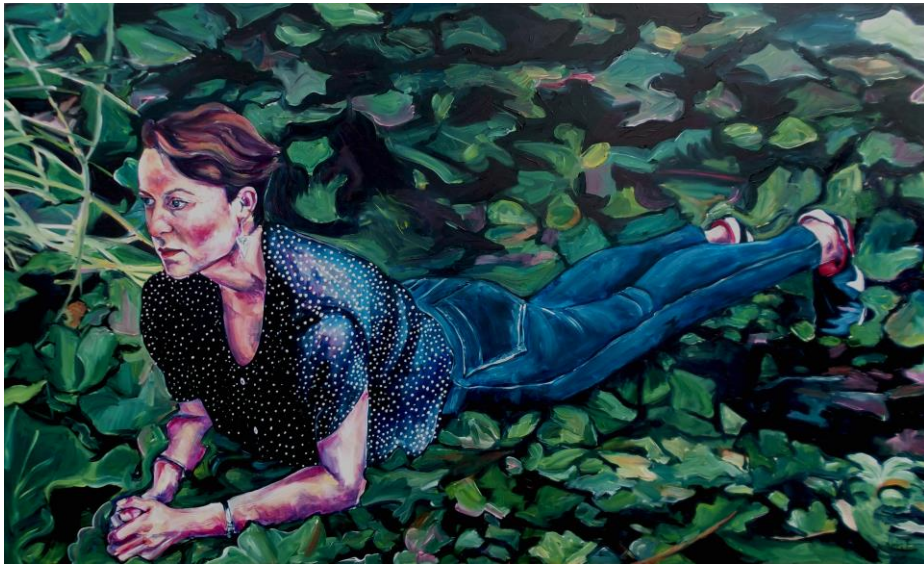


Paradise

2014

Collage, oil and spray paint on board

40 cm x 40cm



New Surroundings

2015

Oil on board



Alvira in Wonderland

2015

Oil on board

5 panels from left to right:

60 x 120cm, 60 x 150cm, 60 x 180cm, 60 x 150, 60 x 93.5cm